

Specifications

Speaker	HX-7B/HX-7W
Enclosure	Bass-reflex type
Power Handling Capacity	Continuous pink noise: 250 W (IEC60268-5: 350 W) Continuous program: 750 W
Rated Impedance	8 Ω
Sensitivity	100 dB (1 W, 1 m)
Frequency Response	75 Hz - 20 kHz
Crossover Frequency	1.7 kHz
Directivity Angle	Horizontal: 100° Vertical: Depending on directivity angle mode
Speaker Component	Low frequency: 13 cm (5.5") cone-type x 8 High frequency: Wave front control horn with compression driver x 4
Input Terminal	Speakon NL4MP x 2 and M4 screw terminal, distance between barriers: 9 mm (0.35")
Finish	Enclosure: Polypropylene, black or white (HX-7B/W) Punched net: Surface-treated steel plate, black or white (HX-7B/W), paint Hanging bracket: Steel plate, 13.0, black or white (HX-7B/W), paint
Dimensions	497 (W) x 664 (H) x 274 (D) mm (19.57" x 26.14" x 10.79")
Weight	30 kg (66.14 lb)
Accessory	Hanging bracket L, R (L and R are symmetrical to each other.) ...1 each Hanging bracket mounting bolt ...4
Option	Matching Transformer: MT-200 (*1) Matching transformer Adapter: HY-MT7 Speaker mounting bracket: HY-60DB/W, HY-CN7B/W, HY-PF7B/W HY-VM7B/W, HY-WM7B/W (*2), HY-C0801W (*2) Speaker stand adapter: HY-ST7

Speaker (Weather-proof)	HX-7B-WP/HX-7W-WP
Enclosure	Sealed type
Power Handling Capacity	Continuous pink noise: 250 W (IEC60268-5: 350 W) Continuous program: 750 W
Rated Impedance	8 Ω
Sensitivity	100 dB (1 W, 1 m)
Frequency Response	105 Hz - 20 kHz
Crossover Frequency	1.7 kHz
Directivity Angle	Horizontal: 100° Vertical: Depending on directivity angle mode
Speaker Component	Low frequency: 13 cm (5.5") cone-type x 8 High frequency: Wave front control horn with compression driver x 4
Input Terminal	M4 screw terminal, distance between barriers: 9 mm (0.35")
Water Protection	IPX4 (Install with every speaker module tilted downward from the horizontal.)
Finish	Enclosure: Polypropylene, black or white (HX-7B/W-WP) Punched net: Surface-treated steel plate, black & white (HX-7B/W-WP), rust proof coating
Dimensions	497 (W) x 664 (H) x 274 (D) mm (19.57" x 26.14" x 10.79")
Weight	30 kg (66.14 lb)
Accessory	Terminal cover ...1, Terminal cover mounting screw ...4 Rubber packing ...1
Option	Matching Transformer: MT-200 (*1) Matching Transformer Adapter: HY-MT7 Speaker mounting bracket: HY-TM7B/W-WP, HY-MS7B/W-WP HY-60DBW-WP, HY-CN7B/W-WP

Subwoofer	FB-150B/FB-150W
Power Handling Capacity	Continuous pink noise: 200 W Continuous program: 600 W
Impedance	8 Ω
Sensitivity	93 dB (1 W, 1 m)
Frequency Response	40 Hz - 400 Hz (-10 dB)
Speaker Component	38 cm (15") cone-type
Input Terminal	Speakon NL4MP x 2 and M5 screw terminal, distance between barriers: 12.2 mm (0.48")
Finish	Enclosure: MDF, black or white (FB-150B/W), urethane paint Punched net: Surface-treated steel plate, black & white (FB-150B/W), paint
Dimensions	505 (W) x 528 (H) x 477 (D) mm (19.88" x 20.79" x 19.17")
Weight	30 kg (66.14 lb)
Option	Speaker rigging frame: HY-PF7B/W

(*1) When mounting the MT-200 Matching Transformer to the speaker, on optional HY-MT7 Matching Transformer Adapter is required.

(*2) HY-VM7B/W Speaker Mounting Bracket is separately required.

Optional Accessories

Speaker Connection Bracket



Angle Adjustment Bar



Rigging Frame



Rigging Bracket



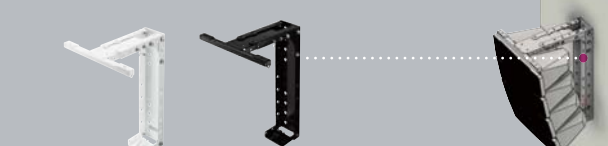
Wall Mounting Bracket



Rigging Bracket



Wall Mounting Bracket



Matching Transformer Adapter

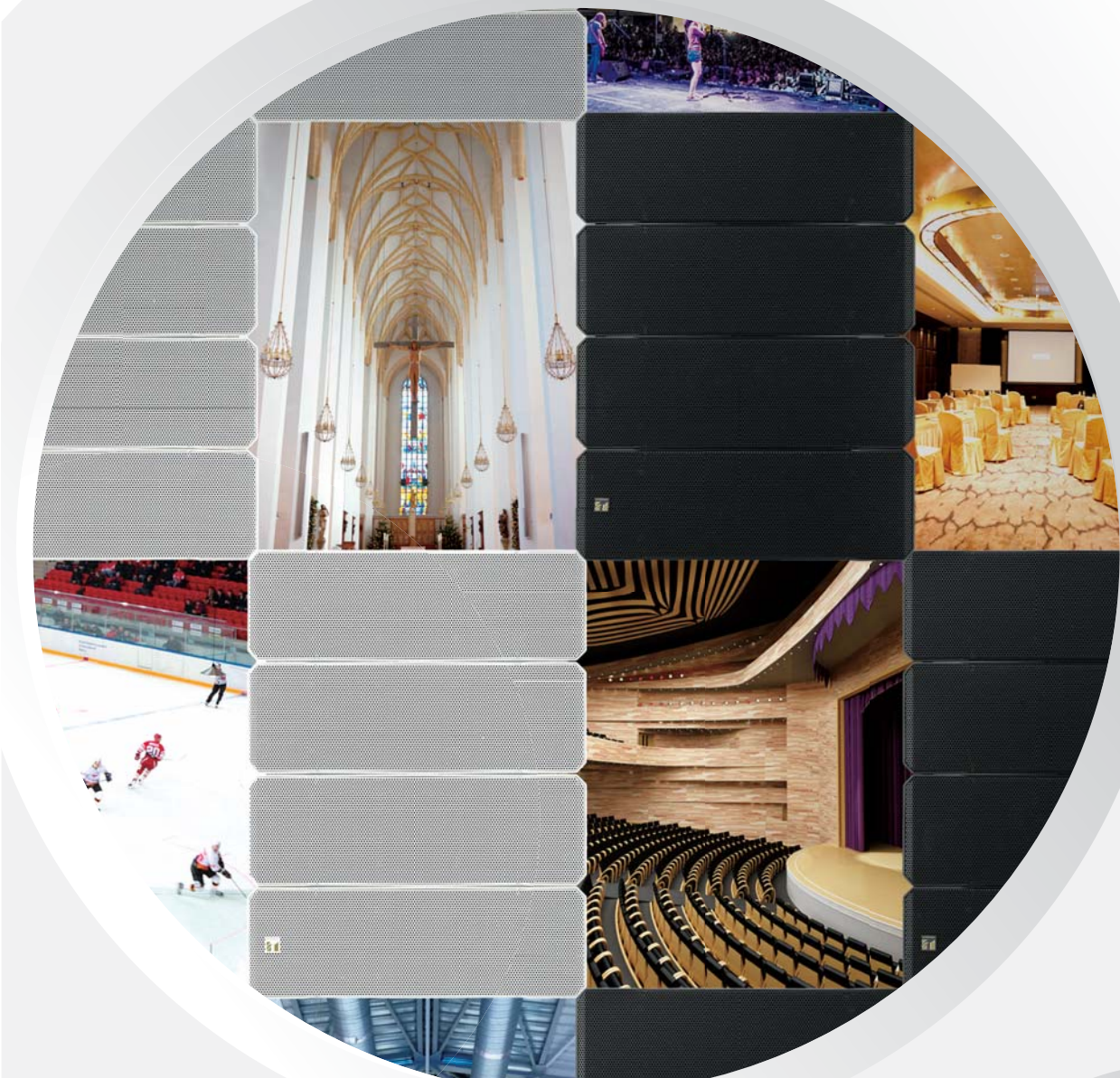


Speaker Stand Adapter



HX-7

Variable Dispersion Speaker



TOA Corporation
www.toa.jp

Specifications are subject to change without notice
(1412) 833-61-100-16-00

From a Whisper to a Scream

Introducing the all new HX-7 variable dispersion line array with SYNC-Drive™ waveguide technology. Thanks to its award winning enclosure design, employing four modules per unit, the HX-7 allows precise adjustment of sound dispersion angles of 0 - 15 - 30 and 45 degrees.

Offering pristine clarity in a wide range of applications from sports venues, auditoriums, concert hall and challenging houses of worship. With the HX-7 you're getting affordable quality and stellar performance. What you get is all that can be heard, from a whisper to a scream, TOA has it covered.



Application examples



Stadiums



Houses of worship



Arenas/Indoor sports facilities



Auditoriums

Meets the need for powerful audio

- Power handling: 750W Continuous Program@8 ohms
- Sensitivity (1W,1m): 100 dB



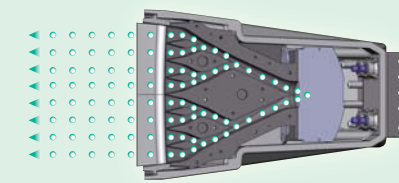
- 2 x 5.5" LF speakers.
- Waveguide loaded 1" HF compression driver.



- Design consists of four integrated speaker "cells" that can be adjusted to optimize the vertical dispersion angle.

Increases coverage and enhances intelligibility

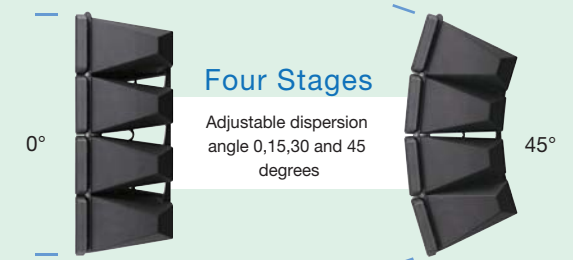
- Built-in isophasic wavefront control horn ensures precise HF control and superior reproduction of HF sounds.



High frequencies compression driver

- Newly added 0° mode facilitates the most effective line array set-up.

* 60° mode is also available with optional HY-60D brackets.

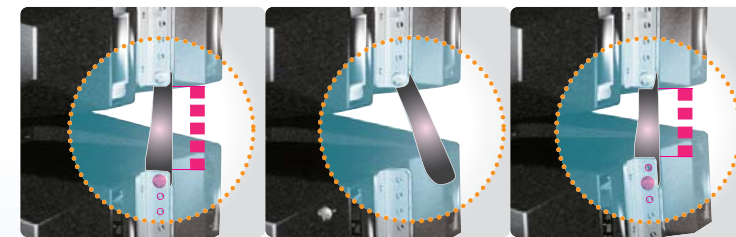


Controlled dispersion

Wider coverage

Offers ease of installation

- Easily adjustable vertical dispersion angle.



0° mode

15° mode

Multi unit configuration

- Maximum two speaker units can be stacked.



Lineup of HX-7 Series

- High / mid-range unit
- Low-range unit



HX-7B/HX-7B-WP HX-7W/HX-7W-WP

FB-150B

FB-150W

* "-WP" is weather-proof type.

More compact version - HX-5 Series

- Power handling: 600W Continuous Program@8 ohms
- Sensitivity (1W,1m): 96 dB @60°mode to 99 dB@15°mode
- Components: 4 x 4.72" cone-type LF drivers and 12 x 1" balanced dome tweeters
- Dimensions(WxHxD): 408 x 546 x 342 mm (16.1" x 21.5" x 13.5")



HX-5B/HX-5B-WP

HX-5W/HX-5W-WP