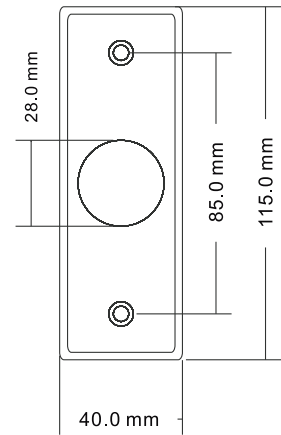


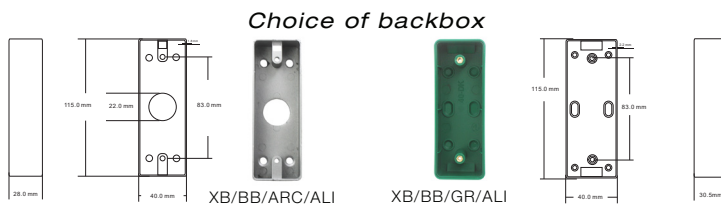
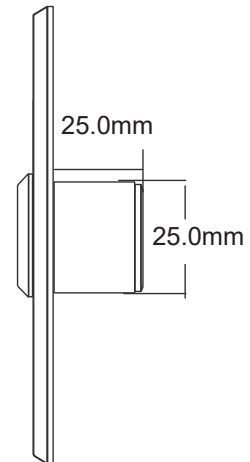
# XB/NT40/ALI

## Touch Free Sensor Exit Button

Brushed aluminum touch free exit button for indoor use with access control systems or electric locks. Ideal for sanitary applications such as cleanrooms, food hospitals, labs and industry use.



- Architrave Touch Free Sensor Exit Button
- Aluminium
- 120mm Read Range
- 2 LED Indicators
- Flush or Surface fitting - (choice of backbox)
- Size: 115 x 40 x 25mm



### Product codes

Code	Description
XB/NT40/ALI	Architrave Aluminium Touchless Sensor Exit Button
XB/BB/ARC/ALI	Metal Architrave Frosted Surface Backbox
XB/BB/GR/ARC	Green Plastic Architrave Backbox

### Specifications

Dimensions:	115 x 40 x 25mm	Operating Temp:	-25°C~+55°C (14-131F)
Contact Rating:	12-24V, 3A	Operating Humidity:	0-95% (relative humidity)
Power:	12VDC & 25VDC	LED Indicator:	Blue LED (Standby) Green LED (Sensation)
Read Range:	120mm	Surface Mount:	Optional Backbox
Output Contact:	NO/NC/COM	Panel:	4mm Thick Aluminium
Mechanical Life:	500,000 Tested	Weight:	0.086kg
Logo:	Customizable		

rev. 1-6/2020



[www.cqr.co.uk](http://www.cqr.co.uk)

[info@cqr.co.uk](mailto:info@cqr.co.uk)

Sales: +44(0)151 606 1000 Tech : +44(0)151 606 6311

CQR Security Ltd, 125 Pasture Road, Moreton, Wirral, CH46 4TH, UK

